



# PERMANENT EROSION CONTROL SOLUTIONS



## Flexamat® - Permanent Solution for a Wide Range of Applications Including:

AIRPORTS

DOT ROADSIDE

DRIVABLE SURFACES

ENERGY SECTOR

INLETS/OUTLETS

LANDFILL/MINE RECLAMATION

SHORELINE

STREAM AND RIVERBANK





# PERMANENT EROSION CONTROL SOLUTIONS

*Erosion Prevention and Protection*

## OUR COMPANY

Motz Enterprises, Inc. is the manufacturer of Flexamat®. The company has been in business for over 30 years and is headquartered in Cincinnati, Ohio.

Flexamat is sold throughout the United States and Canada with material available locally in most areas.

We take pride in our performance and specifying the right product for the right application.

Flexamat is an effective, long term solution. We look forward to working with you.



Flexamat®

# Learn More About How Flexamat® Is The Best Permanent Erosion Solution!



## About Flexamat®

### Permanent Erosion Control

Flexamat is a permanent erosion control mat utilized for stabilizing slopes, channels, low water crossings, inlet/outlet protection, and shorelines. Tied Concrete Block Mat is a generic term for Flexamat. It consists of concrete blocks (6.5" x 6.5" with a 2.25" profile) locked together and embedded into a high strength geogrid. There is 1.5" spacing between the blocks that gives the mat flexibility and allows for optional vegetation growth. The mat is packaged in rolls, making transporting and installing Flexamat efficient. It is manufactured with various underlayments, determined by onsite conditions.

### Vegetated Solution

Flexamat offers permanent, hard armor protection, with a natural vegetation. Flexamat may be mowed over with commercial mowing equipment or left to grow wild. Besides grass, there are many other types of native plant species that can be planted to grow within the mat. For example, Willow stakes and other native plugs can be planted within Flexamat.

### Work With Nature, Not Against

Incorporating perennial vegetation into storm water treatment plans will encourage the benefits of phytoremediation which is the direct use of living green plants for the removal, degradation or containments of contaminants. The establishment of perennial vegetation increases infiltration of storm water runoff into the soil, increased removal of pollutants found in road and parking lots runoff (oils & grease, metals, break dust salt, garbage, nutrients) through filtration and phytoremediation. The perennial vegetation also reduces or eliminates the thermal impacts to storm water runoff by shading the concrete blocks from sunlight and aiding in infiltration and filtering of the runoff, unlike rip rap or other hard armor alternatives.



## Benefits of Flexamat®

HIGH PERFORMANCE

EASY MAINTENANCE

FAST INSTALLATION

SIMPLE INSTALLATION

AESTHETICALLY PLEASING

IMPROVES SAFETY

ENVIRONMENTALLY FRIENDLY

REDUCES CONSTRUCTION COSTS

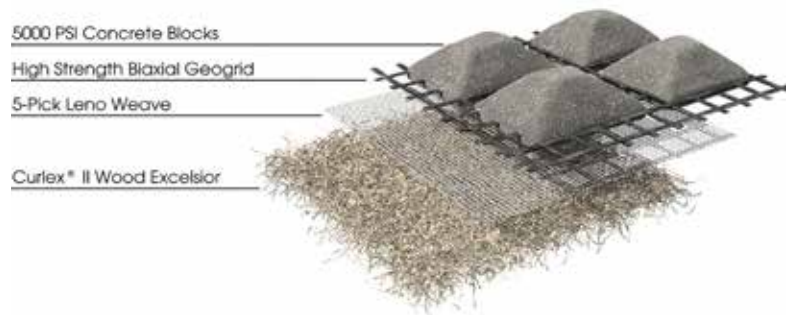
DISCOURAGES GRAFFITI

IMPROVES WATER QUALITY

LOW-IMPACT DEVELOPMENT (LID)



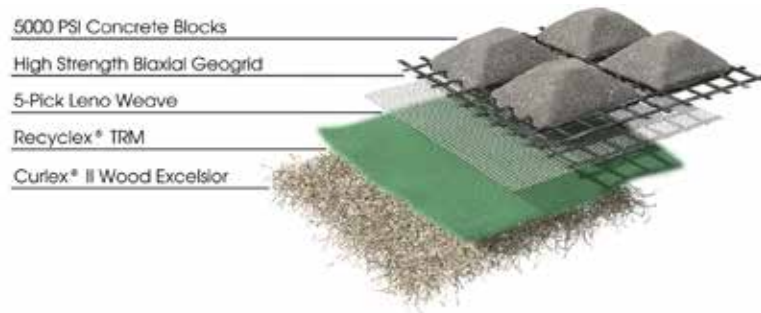
### Flexamat Standard



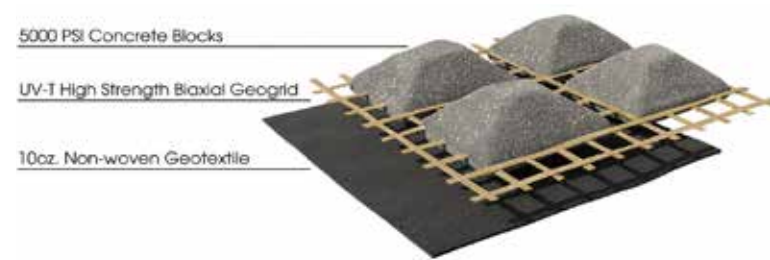
### Flexamat Plus UV-T



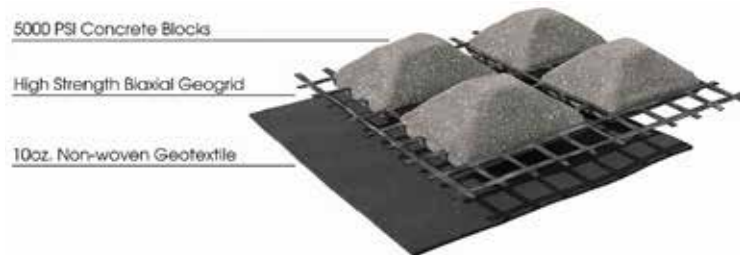
### Flexamat Plus



### Flexamat 10NW UV-T



### Flexamat 10NW



### Flexamat NF UV-T



## GENERAL COMPOSITION OF MATERIALS

<b>Blocks</b>	5000 PSI, Wet-cast Portland Cement
<b>Interlocking Biaxial Geogrid</b>	Fornit 30/30 Polypropylene Geogrid with 2,055 lb/ft biaxial strength UV-T Polypropylene Geogrid with 2,055 lb/ft biaxial strength
<b>Underlayment Options</b>	<b>Standard</b> - Curlex® II ECB & Leno Weave <b>Plus</b> - Recyclax® TRM-V, Curlex® II ECB & Leno Weave <b>Fabric</b> - 10 oz Non-Woven Geotextile *More options available upon request, including Net Free underlayment.

## MANUFACTURING VALUES

<b>Flexamat® Properties</b>	Values
<b>Roll Widths</b>	4' 5.5' 8' 10' 12' 16' 15.5' with geogrid and underlayment extensions (for areas wider than 16')
<b>Roll Lengths</b>	30' 40' 50' / Custom
<b>Material Weight</b>	10 lbs./sf
<b>Block Size</b>	6.5" x 6.5" x 2.25"
<b>Percentage Open Area (POA)</b>	30% min.

## PERFORMANCE

Test	Tested Value	Bed Slope	Soil Classification	Limiting Value
ASTM 6460	Shear Stress	30%	Sandy Loam (USDA)	24+PSF
ASTM 6460	Velocity	20%	Loam (USDA)	30+ ft/sec

# Departments of Transportation Roadways Protection





# Departments of Transportation Roadways Protection

FEDERAL | STATE | MUNICIPAL



Three months after installation

One year after installation



# Departments of Transportation Roadways Protection





# Departments of Transportation Roadways Protection

FEDERAL | STATE | MUNICIPAL



One year after installation.



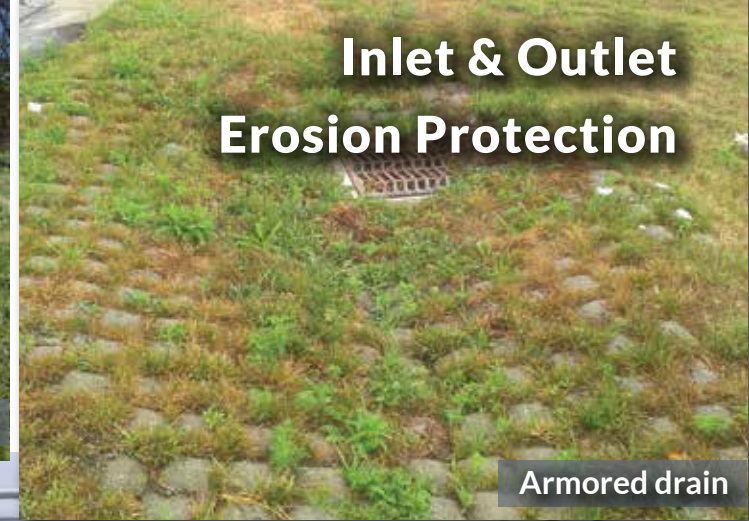




Failing riprap



Outlet armored with Flexamat®, 3 years later



# Inlet & Outlet Erosion Protection

Armored drain



Eroded outlet



Repaired outlet



# Landfill Erosion Protection



60' wide letdown just installed



60' wide letdown 4 years after installation





# Energy Erosion Protection



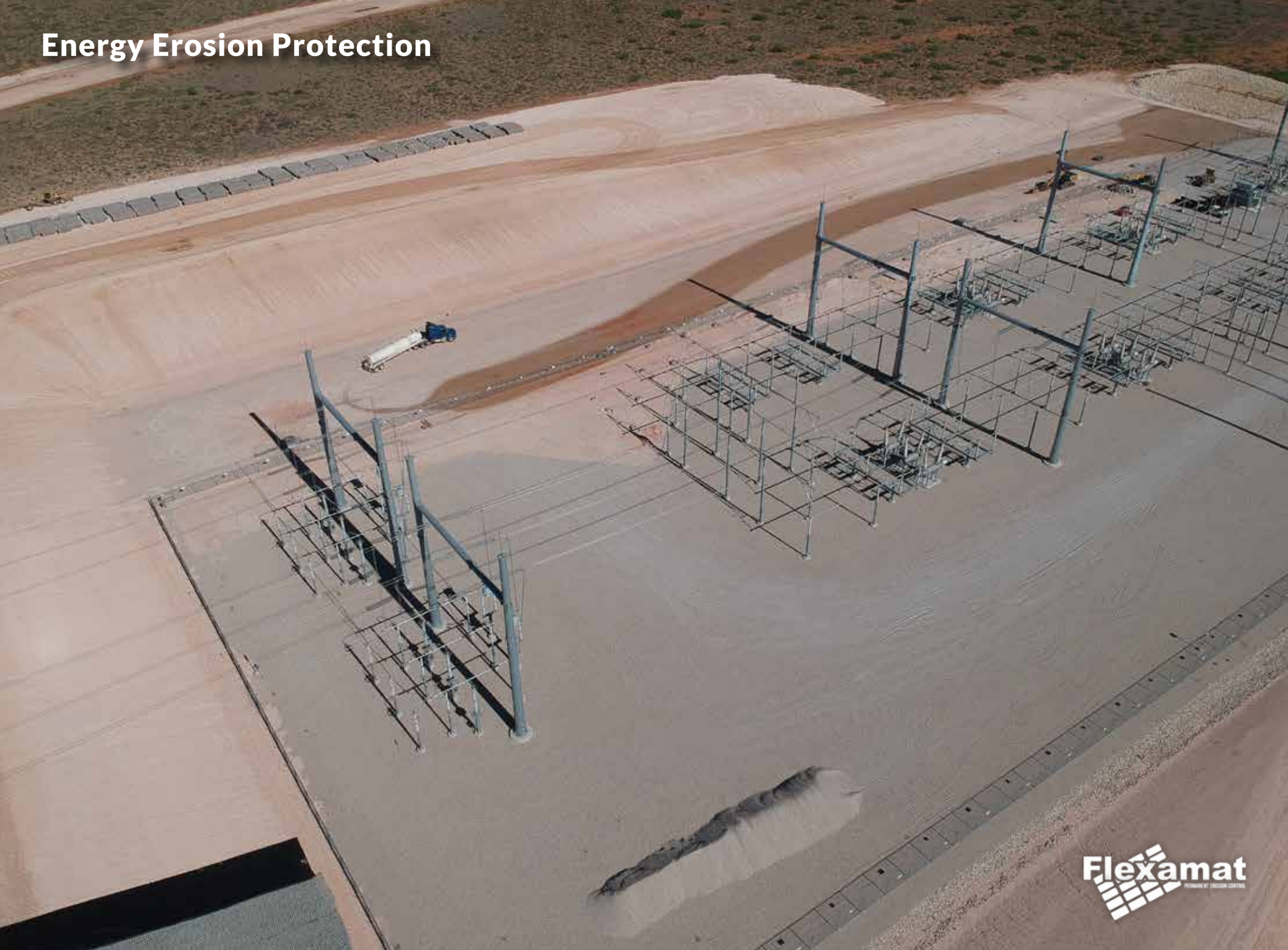
**Flexamat**



Exposed high pressure gas pipeline



# Energy Erosion Protection







One year after installation





# Flood Control









# Percussion Anchors



Gas powered driver installation



Loading anchor with Jack Jaw®



Installed anchors









# Airports





# Shoreline Erosion Protection





# Shoreline Erosion Protection









# Streambank Protection



Fully vegetated Flexamat® with native littorals thriving





# Drivable Surfaces Erosion Protection



Boat ramp



Gravel infill for residential driveway



Access road





# Schools Erosion Protection















Up to 4800 square feet of material can ship on one truckload



Motz Enterprises, Inc.  
3153 Madison Road  
Cincinnati, OH 45209

web: [www.flexamat.com](http://www.flexamat.com)  
email: [info@flexamat.com](mailto:info@flexamat.com)  
phone: 513-772-6689

